



May Crop Production

June Acreage

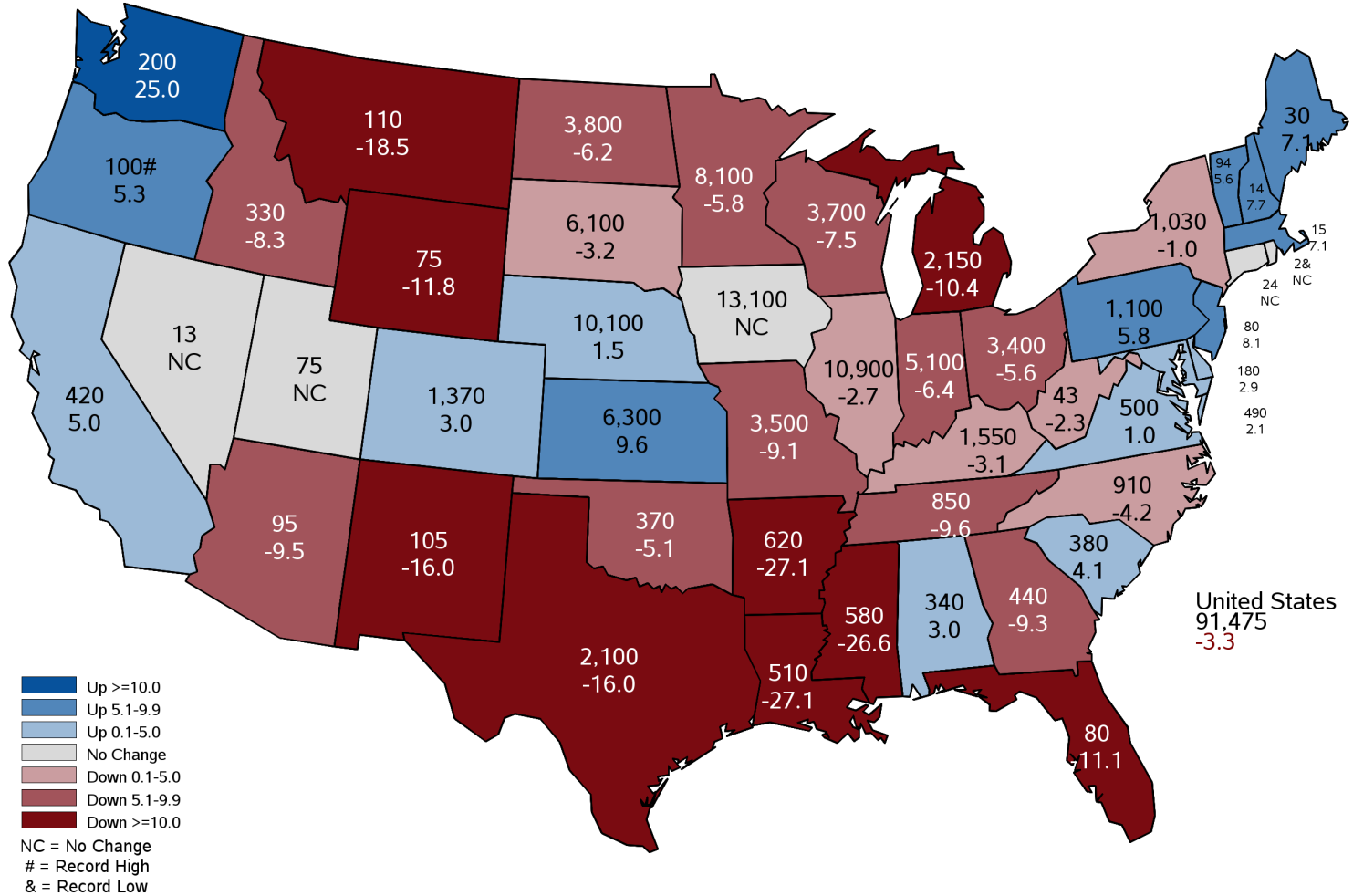
July Crop Production

NE CARC Briefing

Matt Gregg
USDA NASS

2024 Corn Planted Acreage

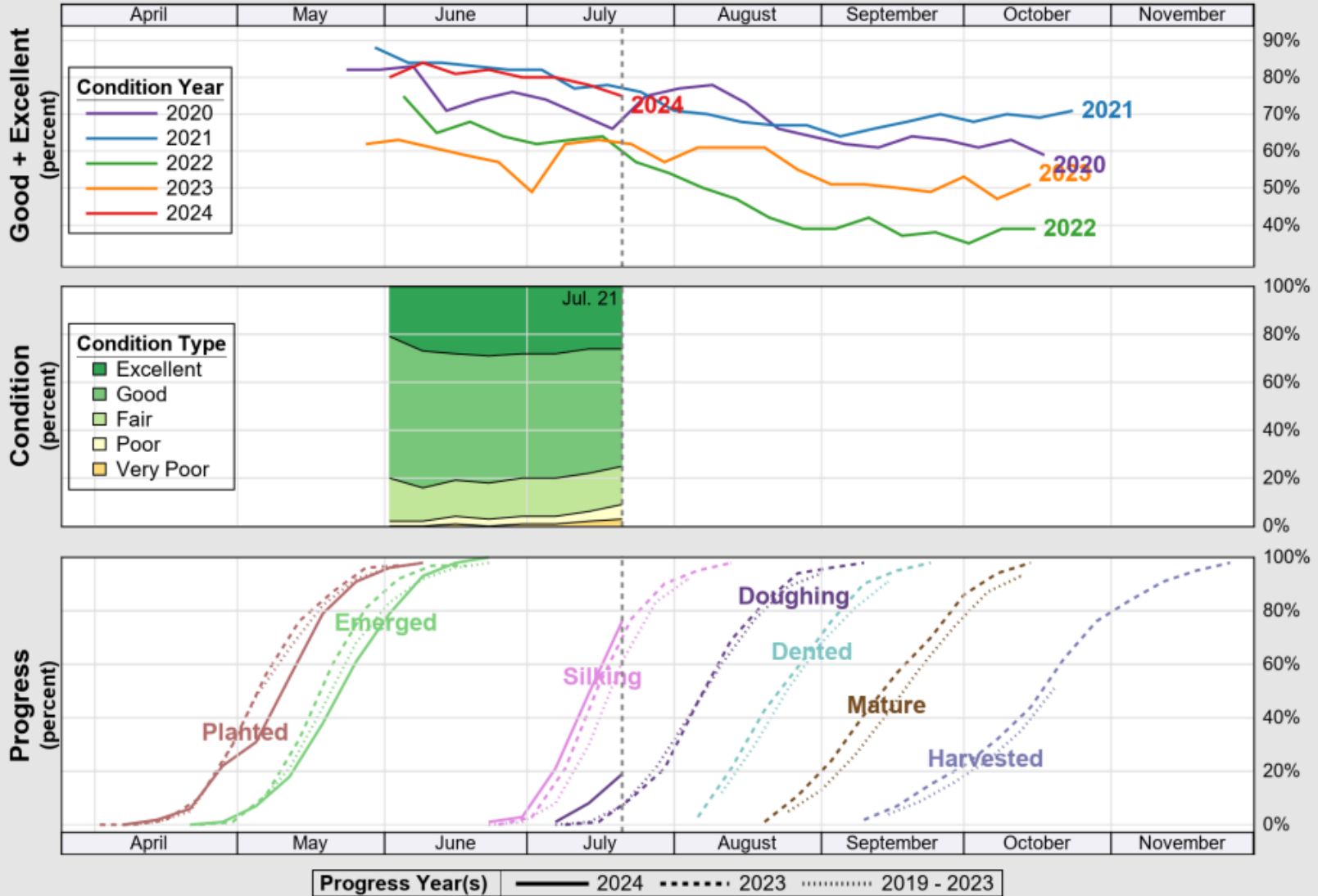
Thousand Acres and Percent Change from Previous Year



USDA

Crop Progress and Condition: Corn in Nebraska, 2024

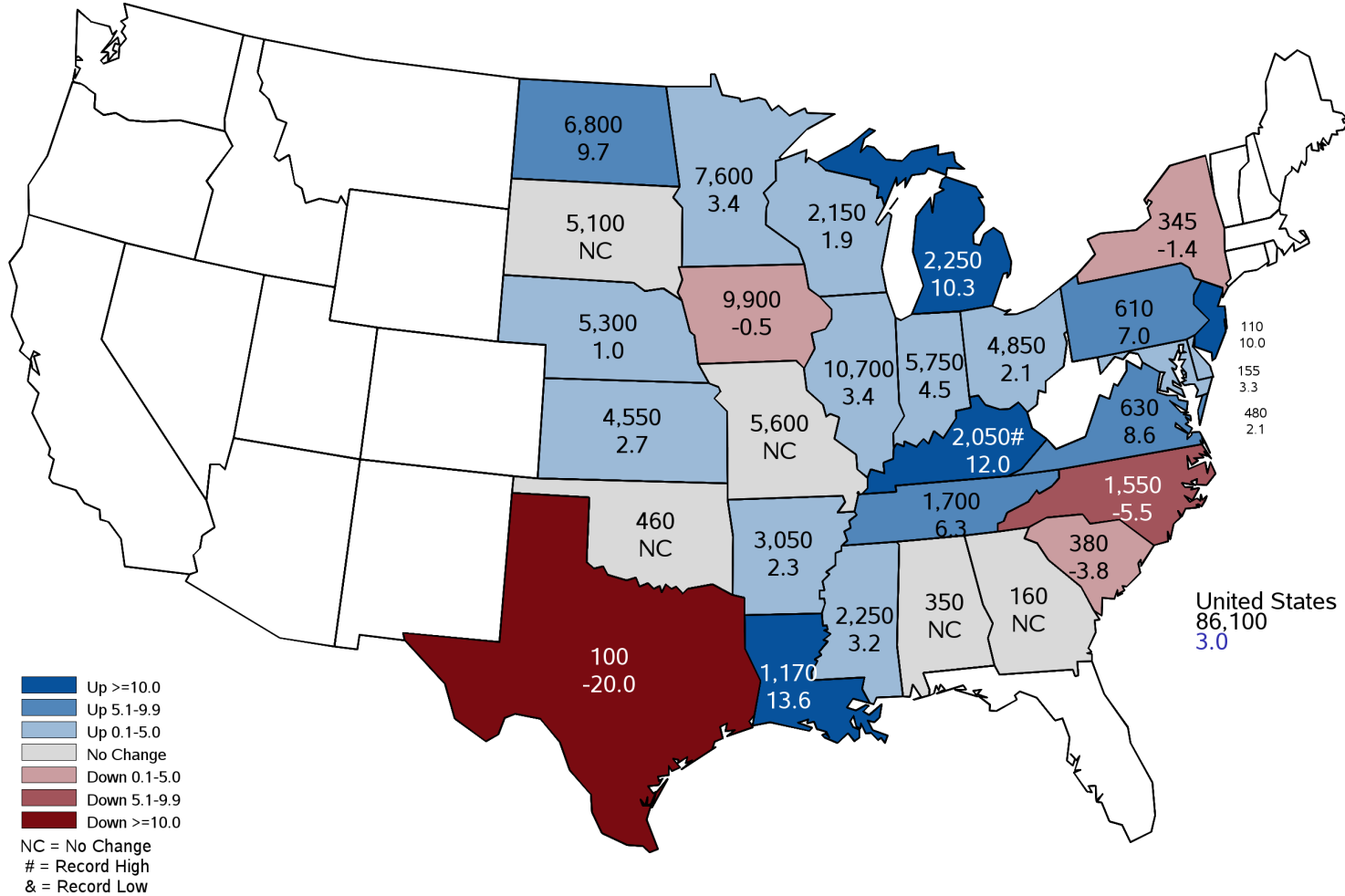
NASS

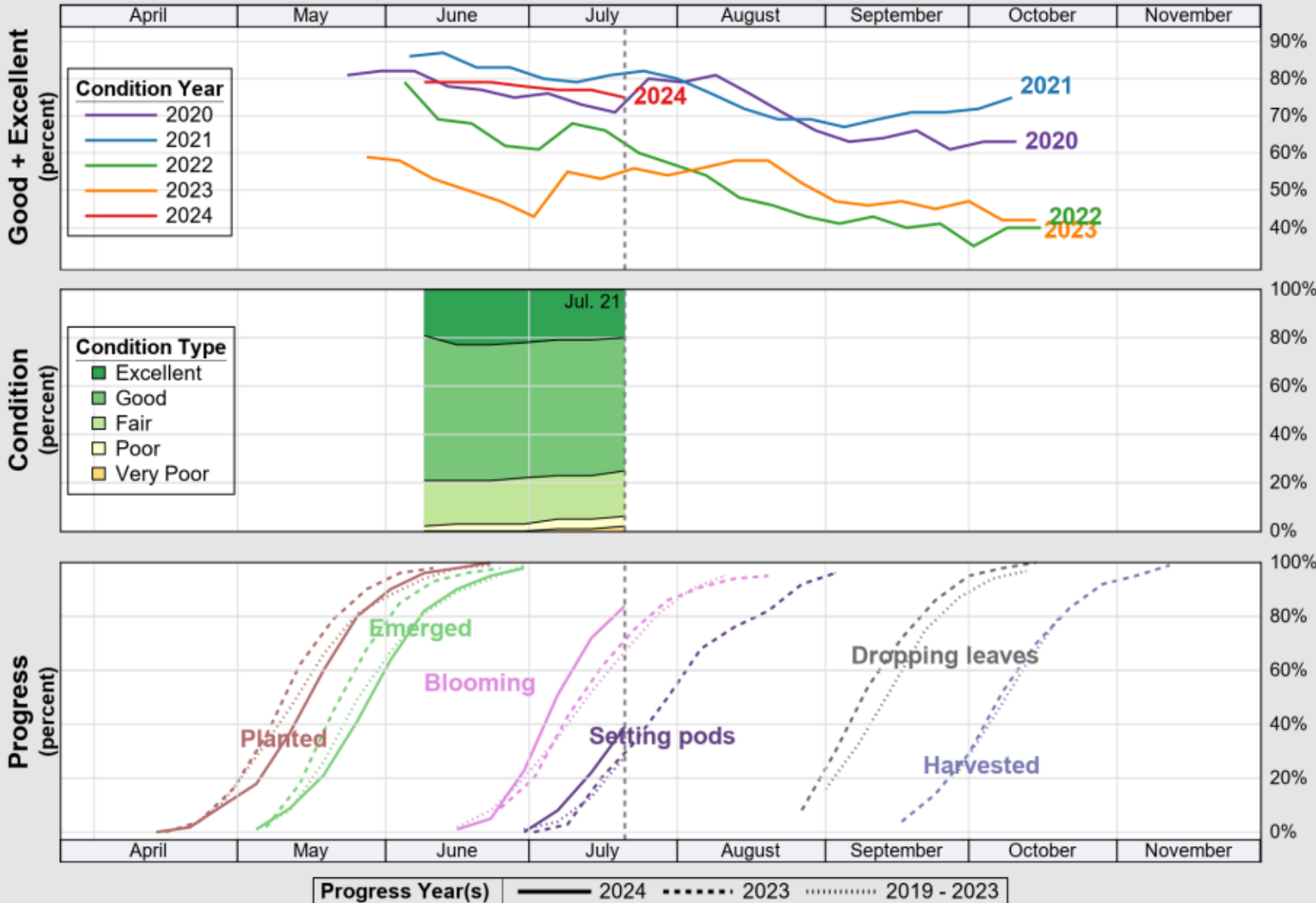


Source: National Agricultural Statistics Service (NASS), Crop Progress Report

2024 Soybean Planted Acreage

Thousand Acres and Percent Change from Previous Year

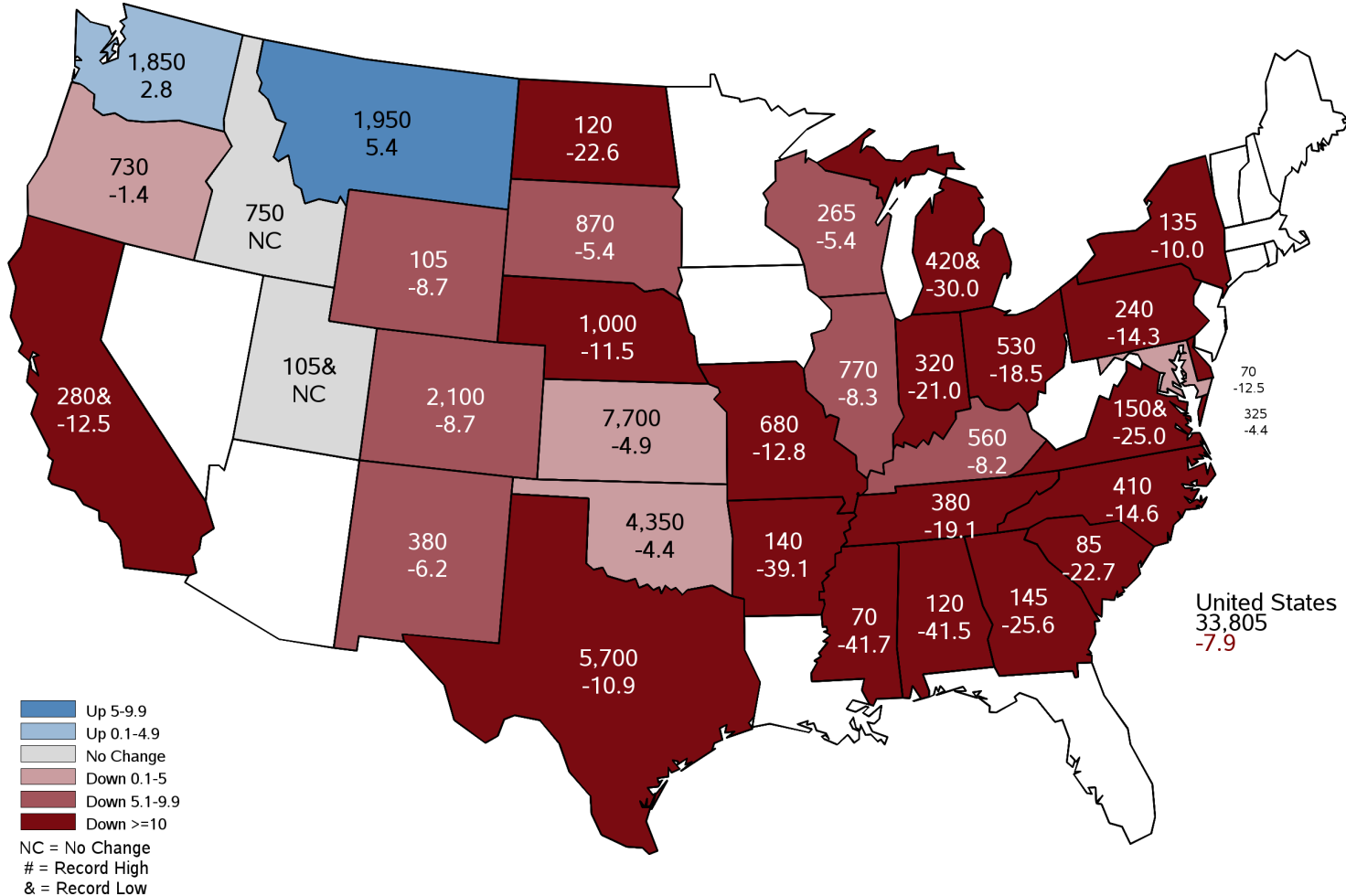




Source: National Agricultural Statistics Service (NASS), Crop Progress Report

2024 Winter Wheat Planted Acres

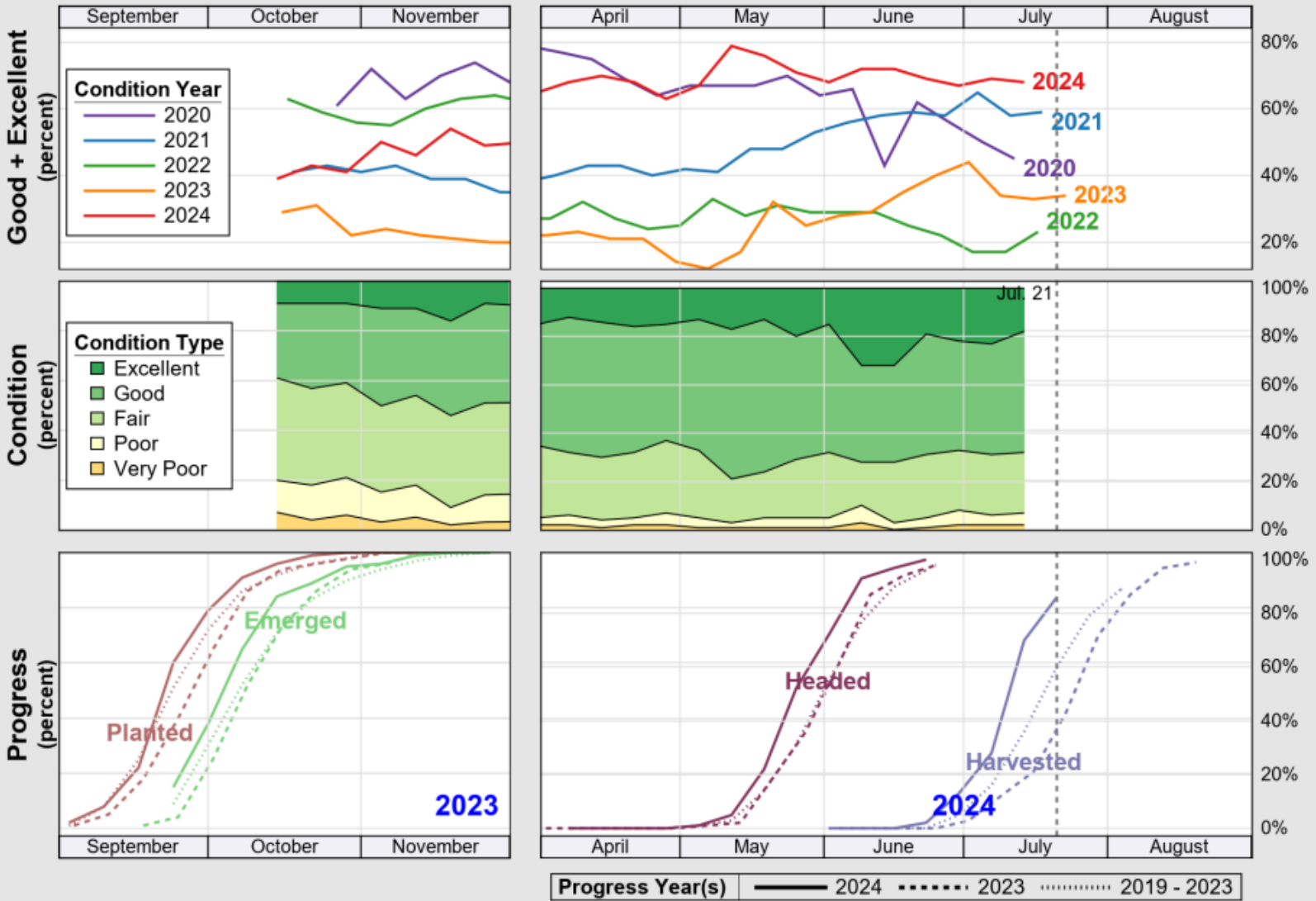
Thousand Acres and Percent Change from Previous Year



USDA

Crop Progress and Condition: Winter Wheat in Nebraska , 2024

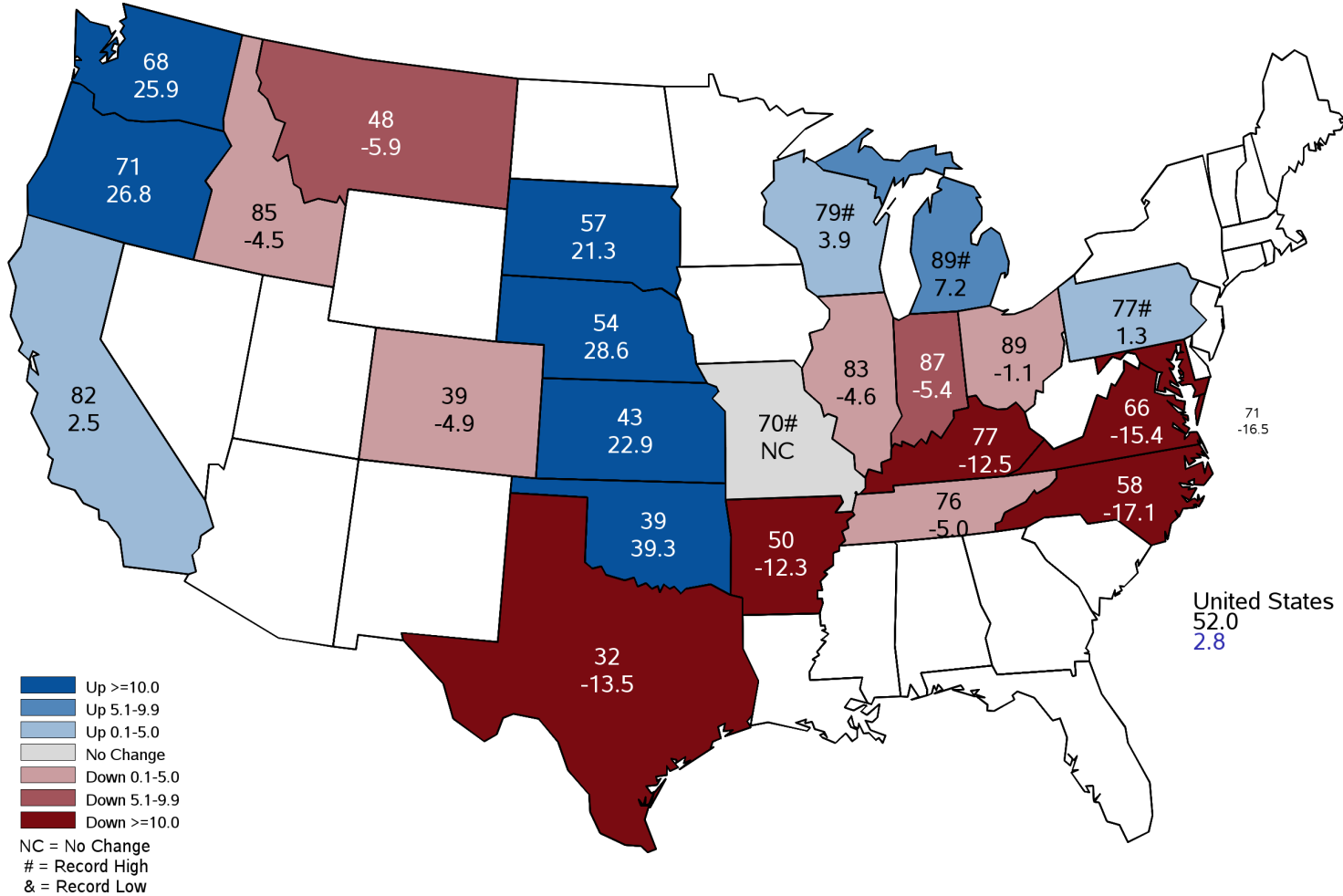
NASS



Source: National Agricultural Statistics Service (NASS), Crop Progress Report

July 2024 Winter Wheat Yield

Bushels and Percent Change from Previous Year





Crop Progress and Condition July 21



	7/21/2024	Last Year	5-Year Average
Winter Wheat: Harvested	86%	37%	60%
Corn: Silking	76%	70%	61%
Soybeans: Blooming	84%	71%	67%
Soybeans: Setting Pods	39%	29%	28%



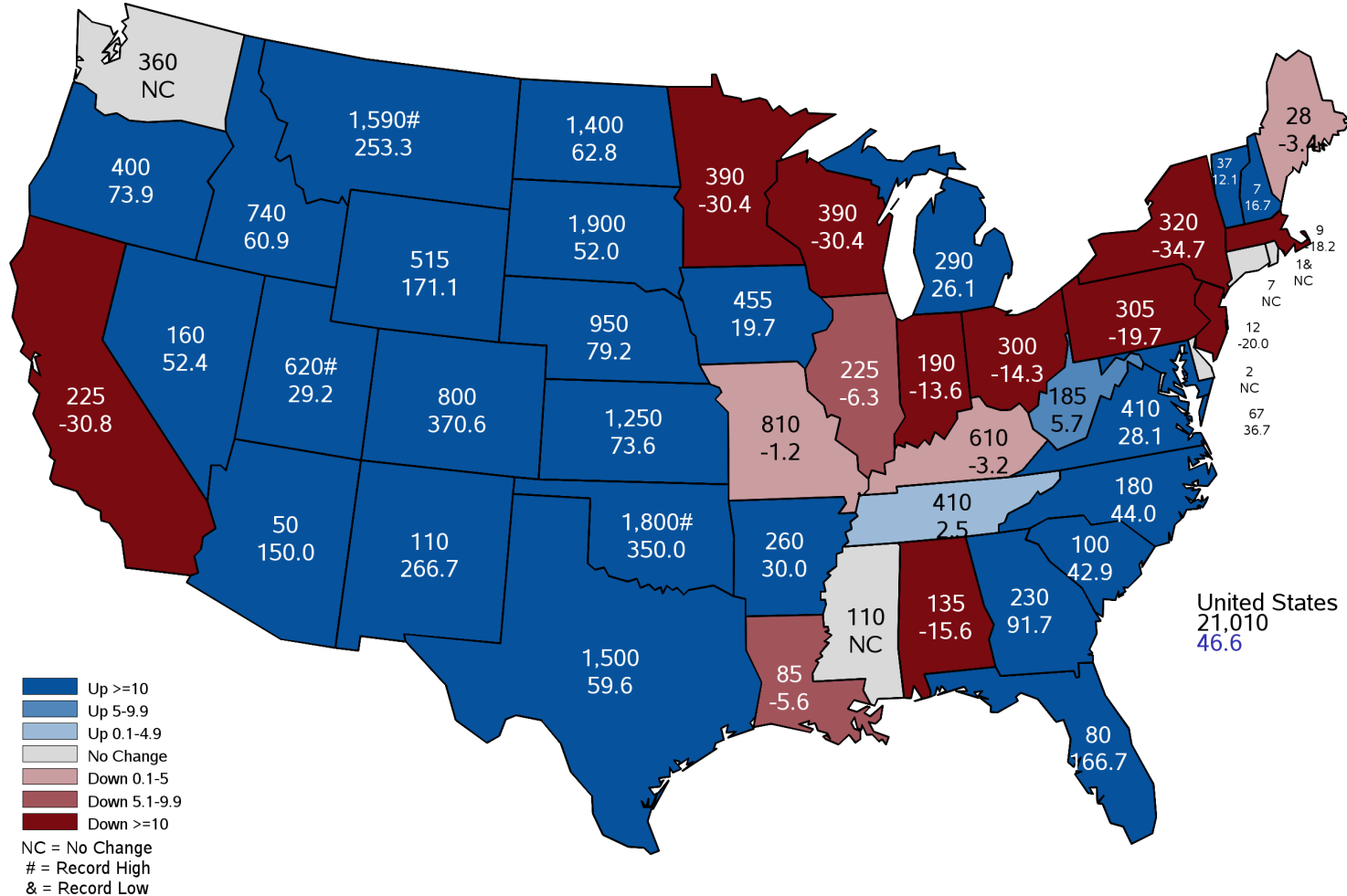
Crop Progress and Condition July 21

	Very Poor	Poor	Fair	Good	Excellent
Corn	3%	6%	16%	49%	26%
Soybeans	2%	4%	19%	55%	20%
Pasture and Range	5%	9%	24%	44%	18%

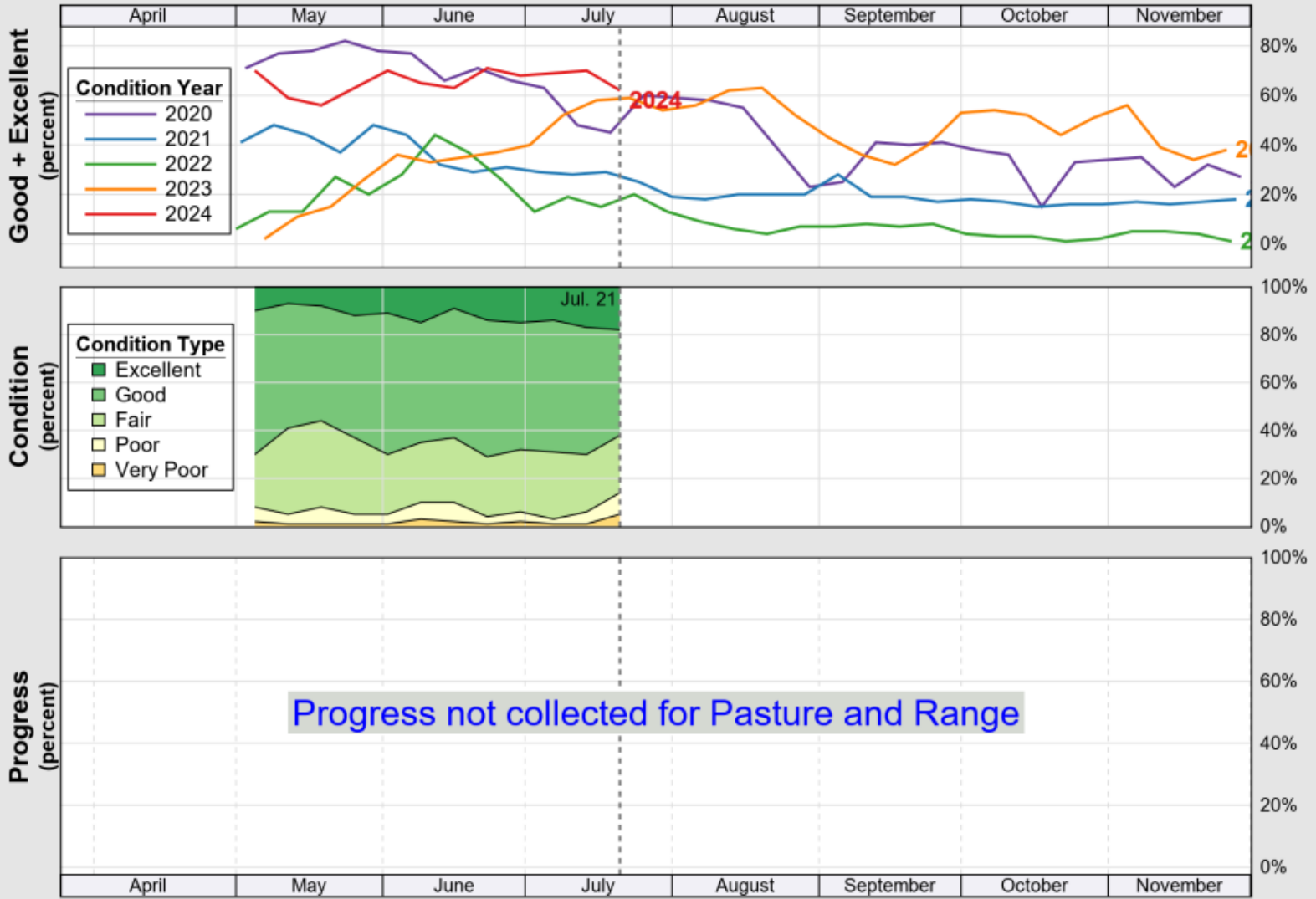
	Very Short	Short	Adequate	Surplus
Topsoil Moisture	3%	23%	62%	12%
Subsoil Moisture	3%	19%	67%	11%

May 2024 Hay Stocks

Thousand Tons and Percent Change from Previous Year



USDA Crop Progress and Condition: Pasture and Range in Nebraska, 2024 **NASS**



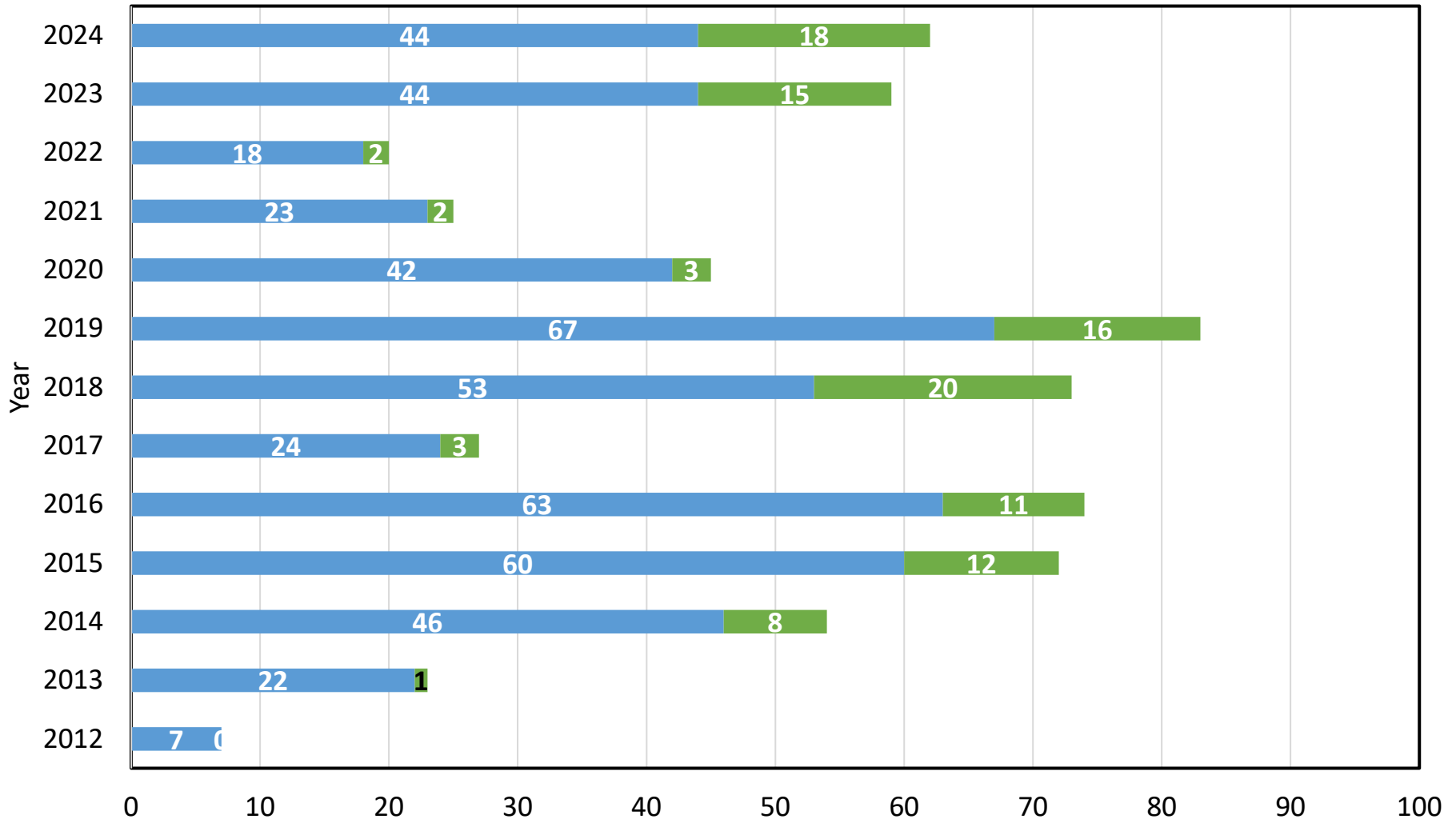
Source: National Agricultural Statistics Service (NASS), Crop Progress Report



Crop Progress and Condition July 21



Nebraska Pastureland Rated Good and Excellent





Selected Upcoming Reports



July 26	Farm Production Expenditures
July 31	Agricultural Prices
August 1	Cotton System Fats & Oils Flour Milling Grain Crushings
August 2	Cash Rents - State Land Values
August 12	Cotton Ginnings Crop Production

<https://www.nass.usda.gov/Publications/index.php>



All Reports Available At

www.nass.usda.gov

For Questions

(202) 720-2127

(800) 727-9540

nass@usda.gov